



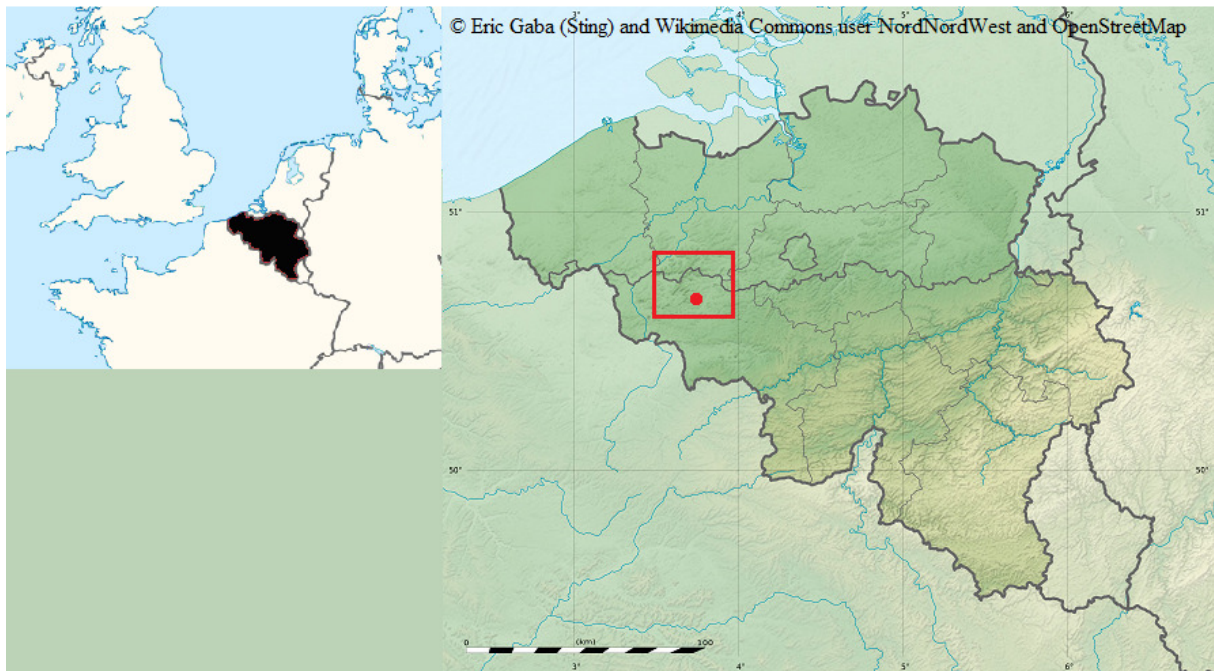
QUADRIGA 16 – 2013

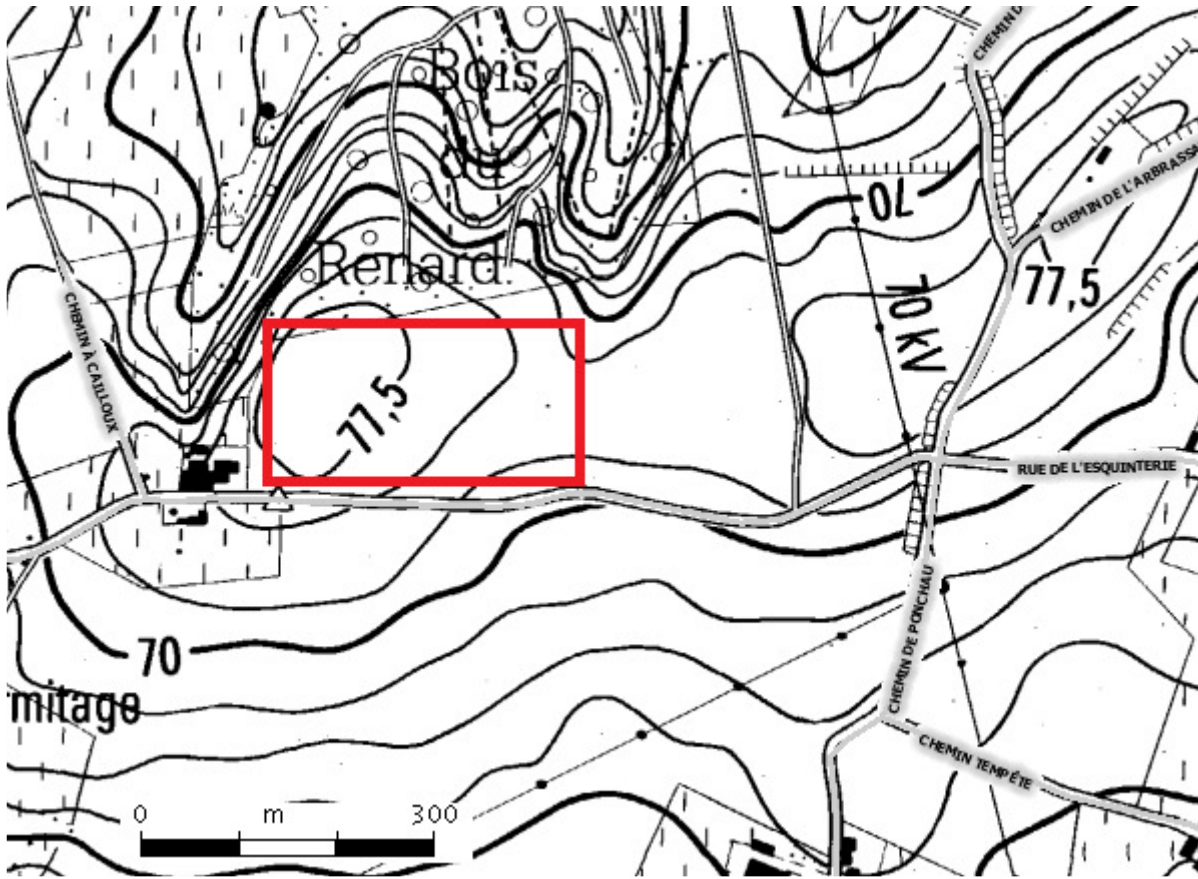
'PLOUGHZONE LITHICS'

The surface assemblage of *Ath-Bois du Renard* (Belgium) Flint type ARs1

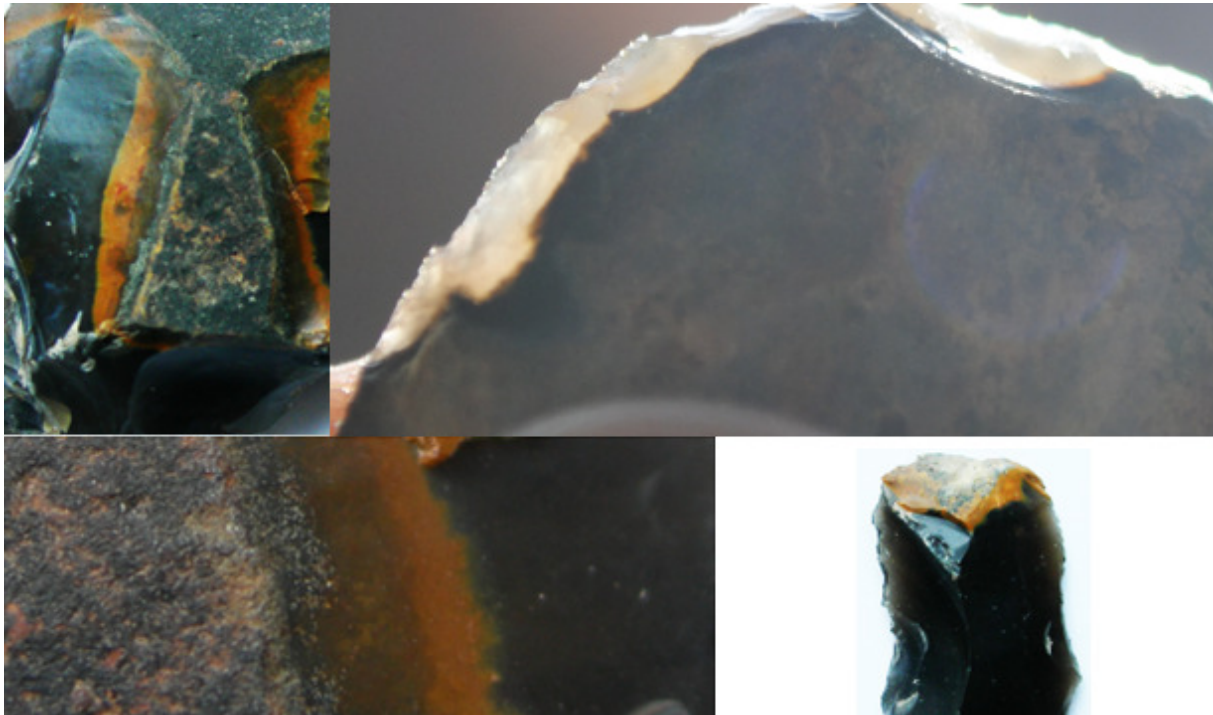
Nick VAN LIEFFERINGE

- Flint type: ARs1
- Location of surface finds: *Ath-Bois du Renard* (province of Hainaut, Belgium)
Lambert-coordinates: X110954 / Y146969 (ploughed farmland)
- Means of artefact collection: fieldwalking
- Number of artefacts (n) = 5
- Weight: 0.090 kg
- Intersite-match: *Silly-Rue Brunfaut* flint type 1 (SBs1) (Van Liefferinge 2012: 5)





- Detailed recording of flint type EMs1



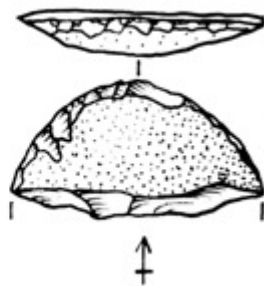
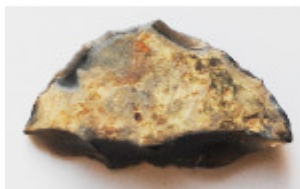
• Typology with photos/drawings

A. (Decortification) flakes (n=4)



B. Scrapers (n=1)

Fragmentary end scraper



• References

VAN LIEFFERINGE N. 2012, *Database of lithic raw material types found at prehistoric surface sites in the region of 'Le Pays des Collines', 'Vlaamse Ardennen' and 'Pajottenland'(BELGIUM), part 1 (= Quadriga 06).*